

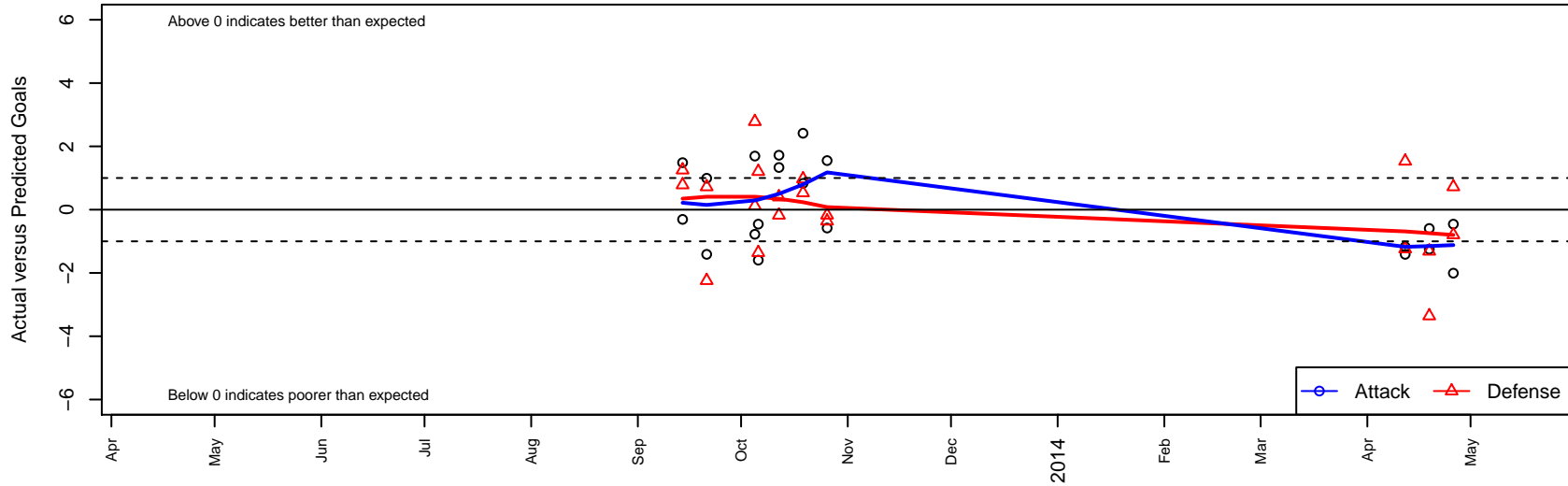
Sawtooth United B01

, ID
 B01 total strength=550
 attack=0.53 defense=0.33
 fall league = Idaho D3 Bracket B U12, Spr Idah
 notes= A team
 alt names used:
 SAWTOOTH UNITED BU12
 SAWTOOTH UNITED FC (ID)
 SAWTOOTH UNITED FC

Venues played:
 Idaho D3 Bracket B U12
 GEM State Challenge U12B Gold U12
 Spr Idaho D3 North U12



Sawtooth United B01
 Dots are actual minus expected GF (blue circles) and GA (red triangles).
 Blue line is smoothed change in attack strength. Red is smoothed change in defense strength.



| | date | home | | away | | venue | pred.home | pred.away |
|-------|-------------|----------------------------------|---|-----------------------------------|---|-----------------------------------|------------------|------------------|
| 26737 | 2014-04-26 | Boise Nationals Bayern Black B02 | 4 | Sawtooth United B01 | 1 | Spr Idaho D3 North U12 | 3.2 | 1.46 |
| 26738 | 2014-04-26 | Sawtooth United B01 | 0 | Fruitland Edge B01 | 2 | Spr Idaho D3 North U12 | 2.0 | 2.72 |
| 26578 | 2014-04-19 | Sawtooth United B01 | 1 | FC Nova White B01 | 3 | Spr Idaho D3 North U12 | 2.2 | 1.69 |
| 26579 | 2014-04-19 | Boise Nationals Galaxy Gold B01 | 6 | Sawtooth United B01 | 1 | Spr Idaho D3 North U12 | 2.6 | 1.59 |
| 26039 | 2014-04-12 | Sawtooth United B01 | 1 | Idaho Rush Blue B01 | 1 | Spr Idaho D3 North U12 | 2.2 | 2.53 |
| 26040 | 2014-04-12 | Sawtooth United B01 | 0 | Nationals West B01 | 4 | Spr Idaho D3 North U12 | 1.4 | 2.76 |
| 15780 | 2013-10-26 | Mountain Home SC Strikers B01 | 2 | Sawtooth United B01 | 6 | Idaho D3 Bracket B U12 | 1.6 | 4.45 |
| 15781 | 2013-10-26 | Sawtooth United B01 | 2 | Boise Nationals Galaxy Silver B01 | 2 | Idaho D3 Bracket B U12 | 2.6 | 1.83 |
| 14846 | 2013-10-19 | Sawtooth United B01 | 6 | Idaho Inferno B01 | 0 | Idaho D3 Bracket B U12 | 3.6 | 0.97 |
| 14849 | 2013-10-19 | Sawtooth United B01 | 3 | Idaho Rush Blue B01 | 2 | Idaho D3 Bracket B U12 | 2.2 | 2.53 |
| 13786 | 2013-10-12 | Sawtooth United B01 | 5 | Idaho Arsenal United Pumas B01 | 2 | Idaho D3 Bracket B U12 | 3.3 | 1.82 |
| 13788 | 2013-10-12 | FC Nova Mix 02-01 B01 | 0 | Sawtooth United B01 | 6 | Idaho D3 Bracket B U12 | 0.4 | 4.67 |
| 13238 | 2013-10-06 | Sawtooth United B01 | 1 | Boise Nationals Bayern Black B02 | 2 | GEM State Challenge U12B Gold U12 | 1.5 | 3.20 |
| 13239 | 2013-10-06 | Sawtooth United B01 | 0 | Boise Nationals Galaxy Gold B01 | 4 | GEM State Challenge U12B Gold U12 | 1.6 | 2.64 |
| 12758 | 2013-10-05 | FC Nova SuperNova Black B01 | 0 | Sawtooth United B01 | 3 | GEM State Challenge U12B Gold U12 | 2.8 | 1.31 |
| 12759 | 2013-10-05 | Boise Nationals Galaxy Blue B01 | 6 | Sawtooth United B01 | 0 | GEM State Challenge U12B Gold U12 | 6.1 | 0.78 |
| 10876 | 2013-09-21 | Sawtooth United B01 | 3 | Fruitland Edge B01 | 2 | Idaho D3 Bracket B U12 | 2.0 | 2.72 |
| 10878 | 2013-09-21 | Nationals West B01 | 5 | Sawtooth United B01 | 0 | Idaho D3 Bracket B U12 | 2.8 | 1.41 |
| 9900 | 2013-09-14 | Sawtooth United B01 | 1 | FC Nova SuperNova Black B01 | 2 | Idaho D3 Bracket B U12 | 1.3 | 2.78 |
| 9901 | 2013-09-14 | Twin Falls Rapids United B01 | 2 | Sawtooth United B01 | 3 | Idaho D3 Bracket B U12 | 3.3 | 1.51 |